

Biometric Client Package Installation Manual for MFS 100



Contents

1. Copyright Information	3
2. Device Information	3
3. Software Requirement.....	3
4. Procedure	3
4.1. Mantra MFS100 Drive Installation	3
4.2. Initialize and Test the Device.....	6
4.3. Install Mantra RD Service.....	9
4.4. Test the RD Service	11
5. Access Application over the Internet	13

1. Copyright Information

This software is the copyright product of Mantra Softech and is protected by the copyright laws and international provisions.

2. Device Information

MFS100 is brand of Mantra Softech - STQC, GOVT. OF INDIA certified USB Fingerprint scanner equivalent to FBI PIV certification.

MFS100 is based on optical sensing technology which efficiently recognizes poor quality fingerprints also. MFS100 can be used for authentication, identification and verification functions that let your fingerprint act like digital passwords that cannot be lost, forgotten or stolen. Hard optical sensor is resistant to scratches, impact, vibration and electrostatic shock.

3. Software Requirement


S. No.	Particular	Specifications
1.	Operating System	Windows 7 and Above
2.	RAM	1 GB and Above
3.	Hard Disk Space	500MB Free Space
4.	USB Port	At least one USB Port should be enabled
5.	.Net Framework	3.5 and above
6.	Browser	Mozilla Firefox, IE, Chrome.
*	.Net Framework	3.5 & above

Note : Operating System / Windows has to be Licensed version. Trust will take no responsibility if the same does not work on Pirated version of the OS / Windows.

4. Procedure

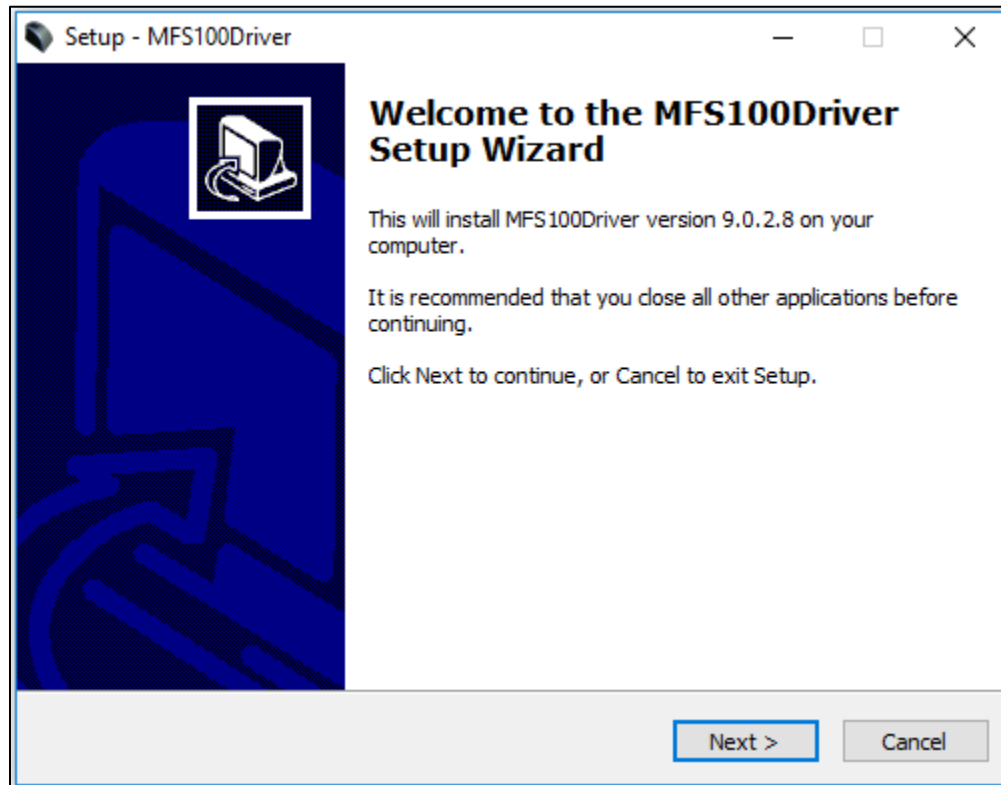
4.1. Mantra MFS100 Drive Installation

Down the driver installation files from the YSRAHCT portal.

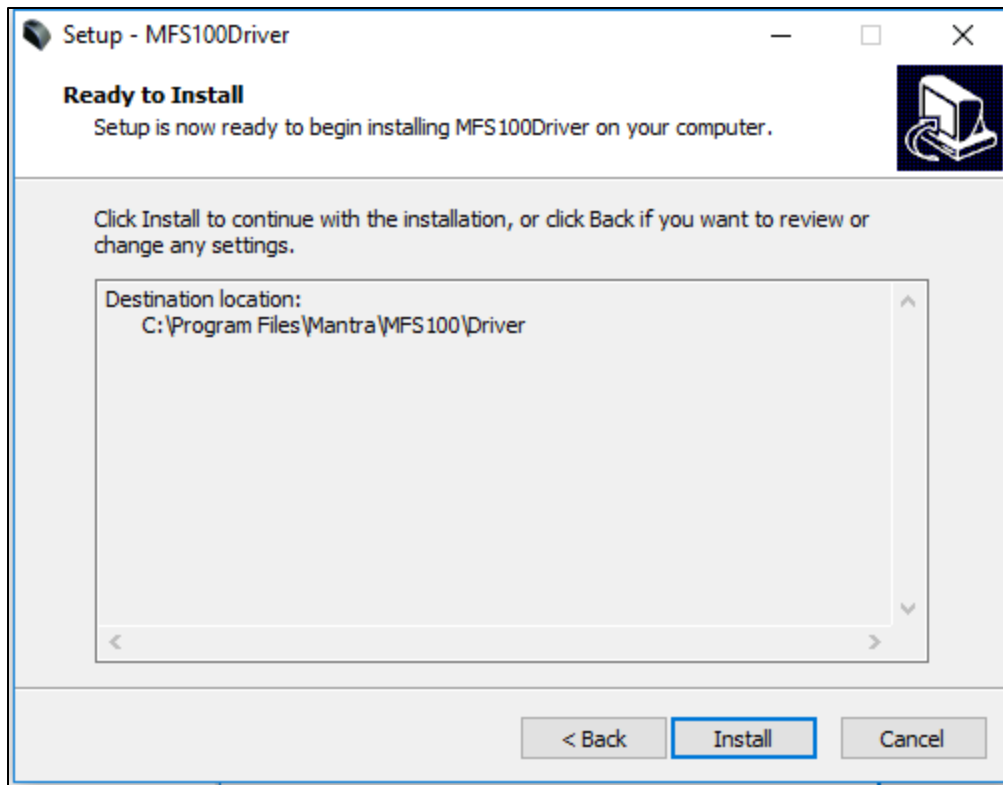
Name	Type
 MantraRDService	Application
 MFS100Driver	Application

Note: To install Mantra scanner drivers and necessary service, setup need to access system32 folder. In this case setup needs administrator privileges.

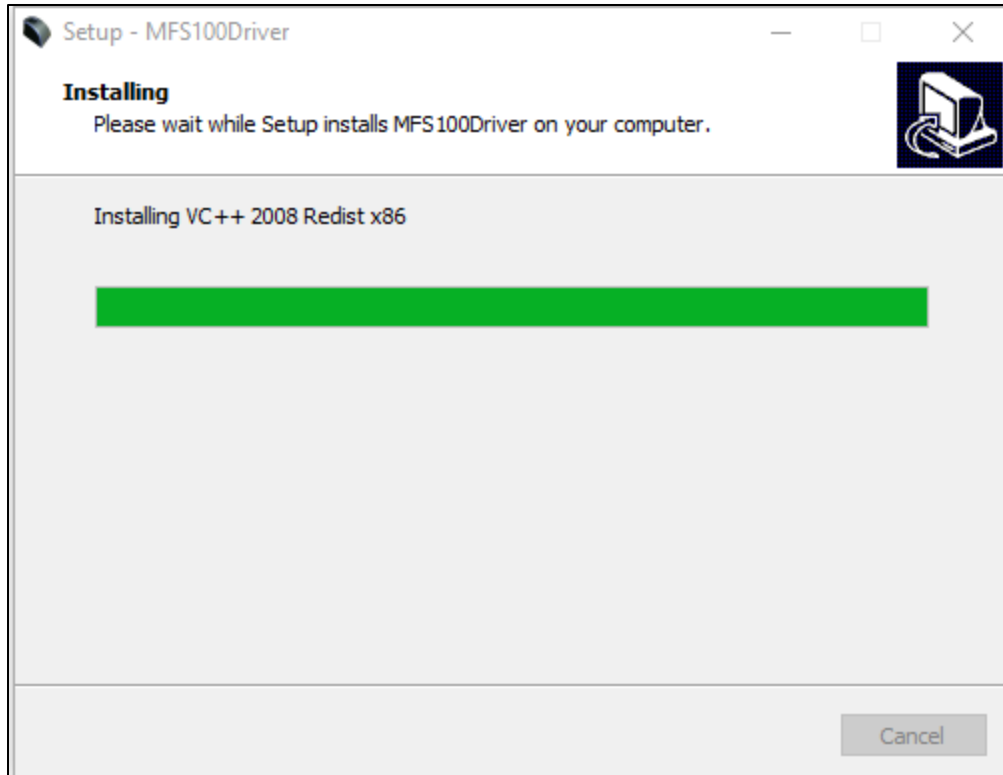
- **Click on MFS100Driver file**

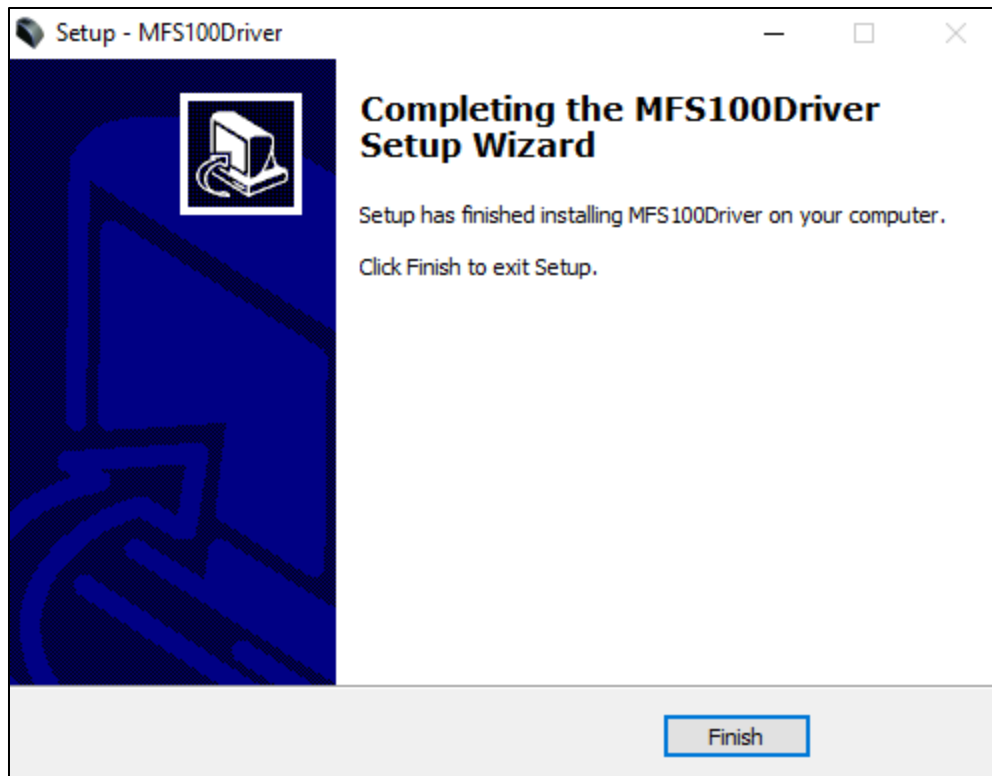


- **Click on Next**



- **Click on Install.**

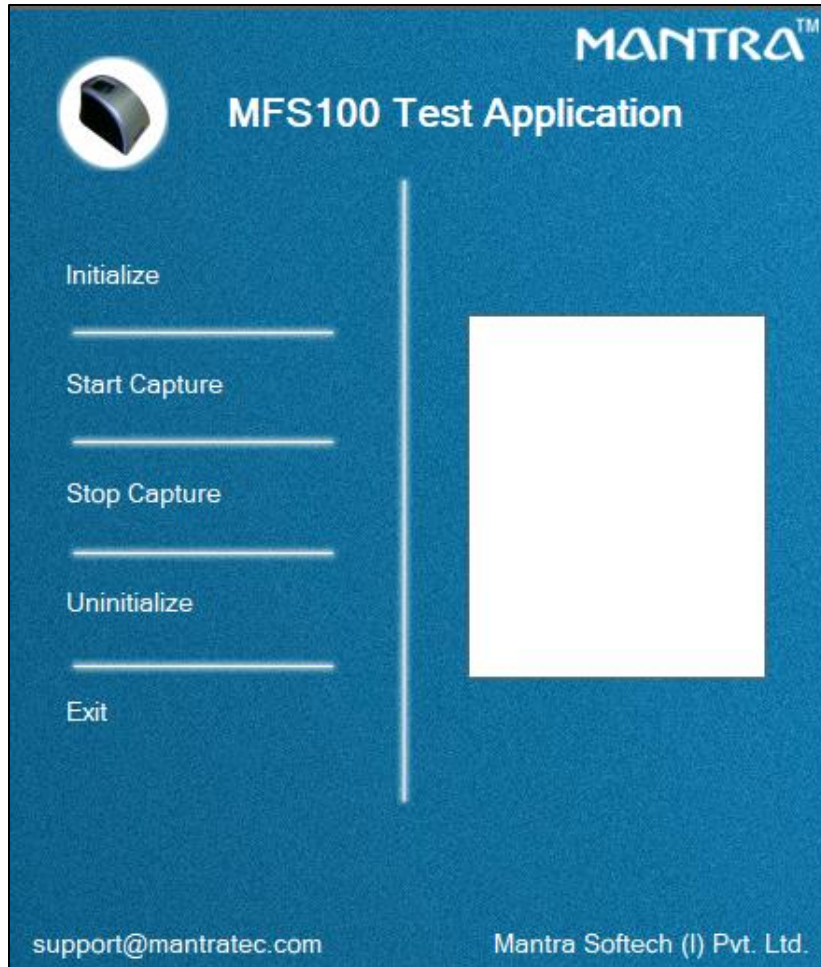




- **Click on Finish.**

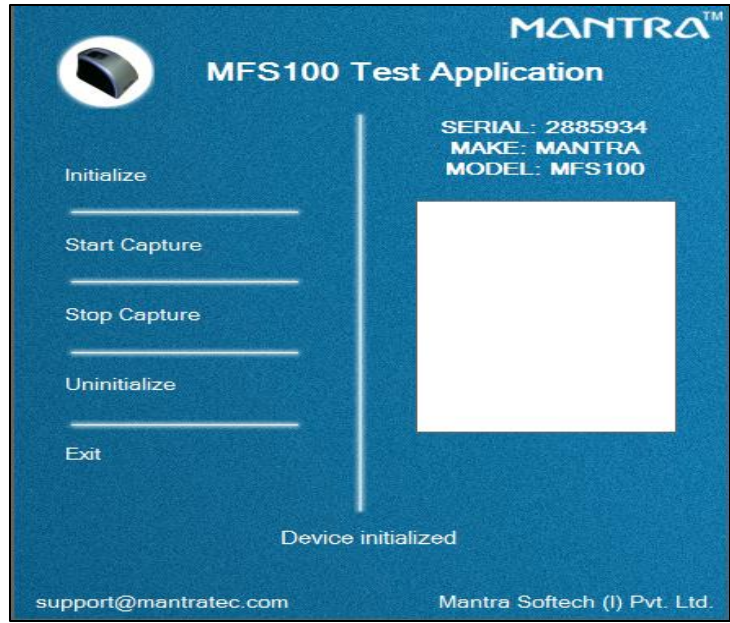
4.2. Initialize and Test the Device

- **Click on Icon for MFS100 in system tray of your PC/Laptop.**



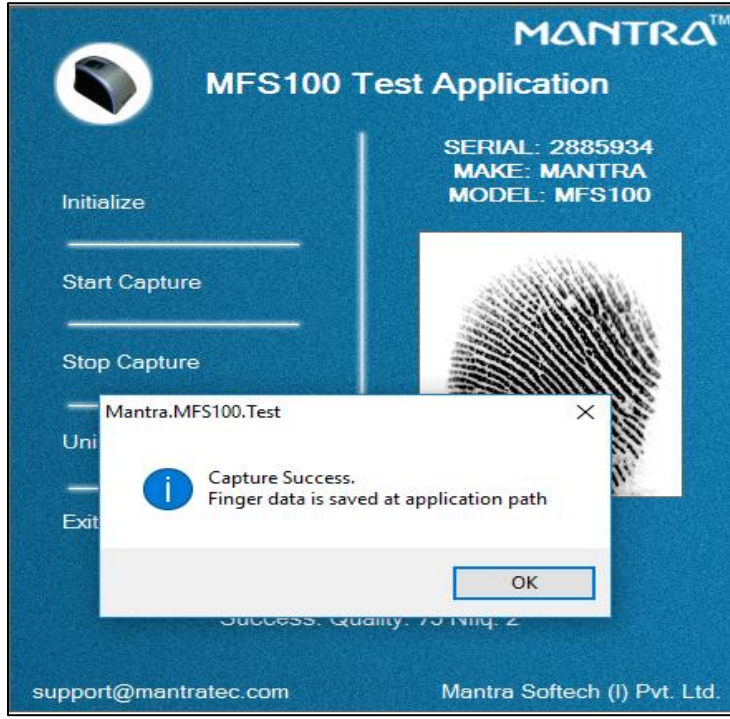
➤ **Plug-in the device**

Device Initialized and device information displayed.



➤ **Click on Start Capture**

Red light on device appears. Put your finger on the device

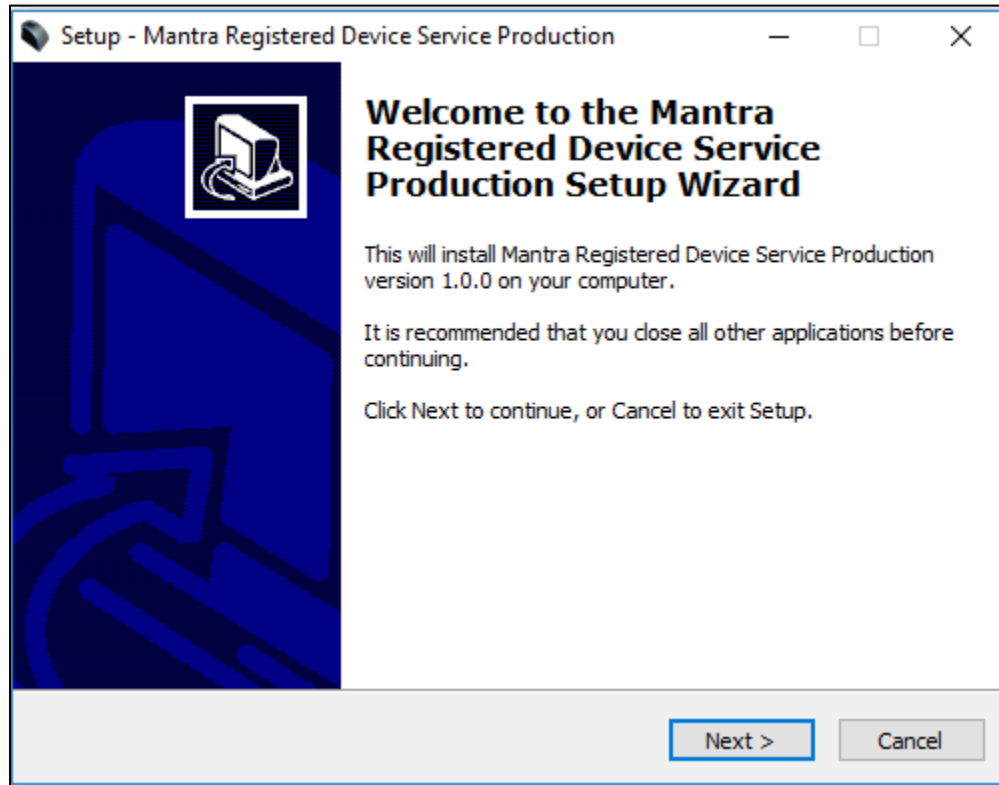


Device is working fine and ready to use.

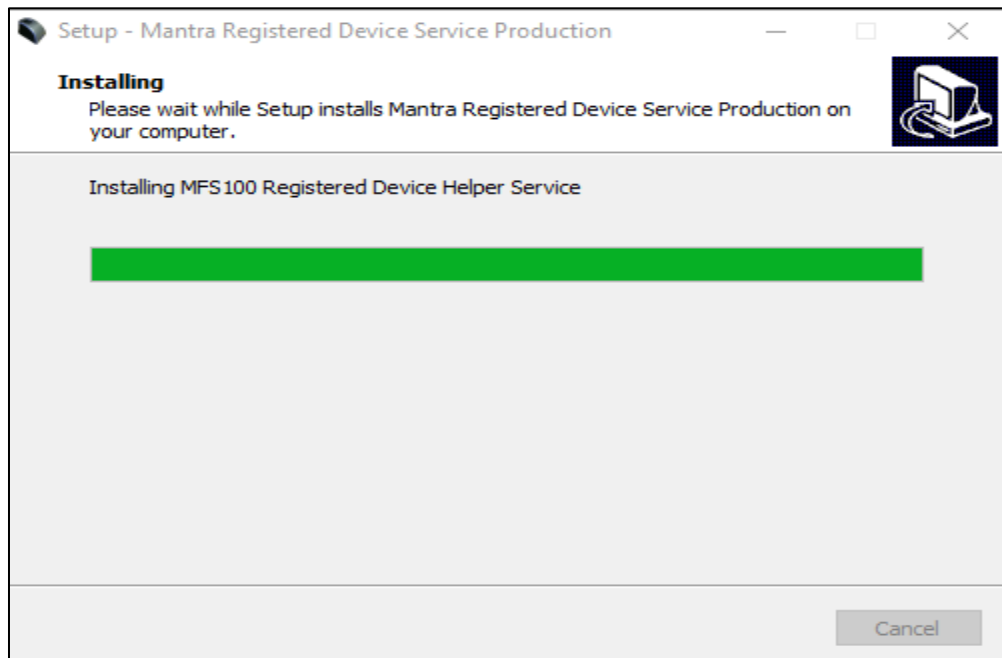
➤ **Click on Exit**

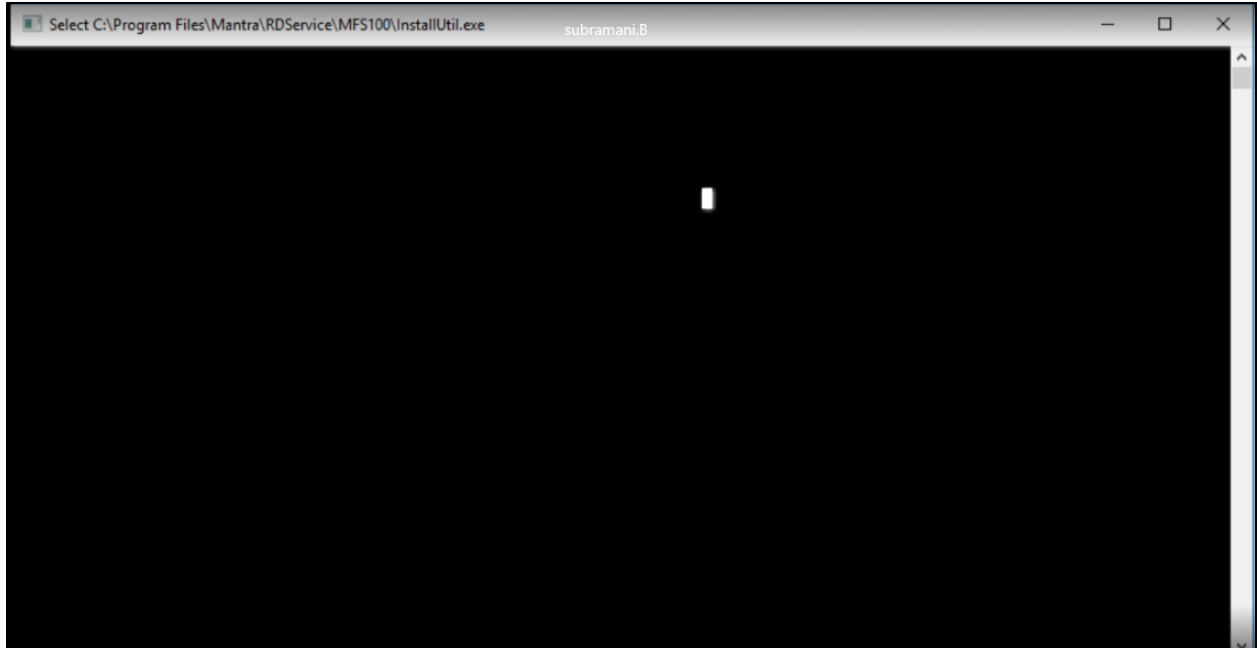
4.3. Install Mantra RD Service

- Right click on Setup file “MantraRDSservice” and select “Run as Administrator”

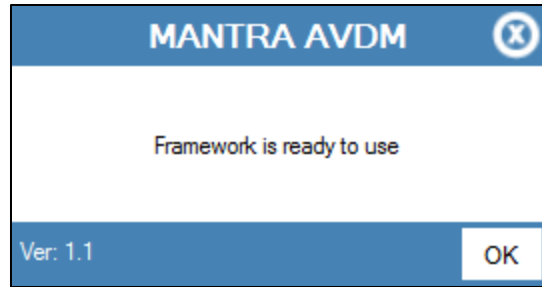


- Click on Next on Setup wizard screen.





➤ **Click on Finish Button.**



Above popup display on successful installation of RD service.

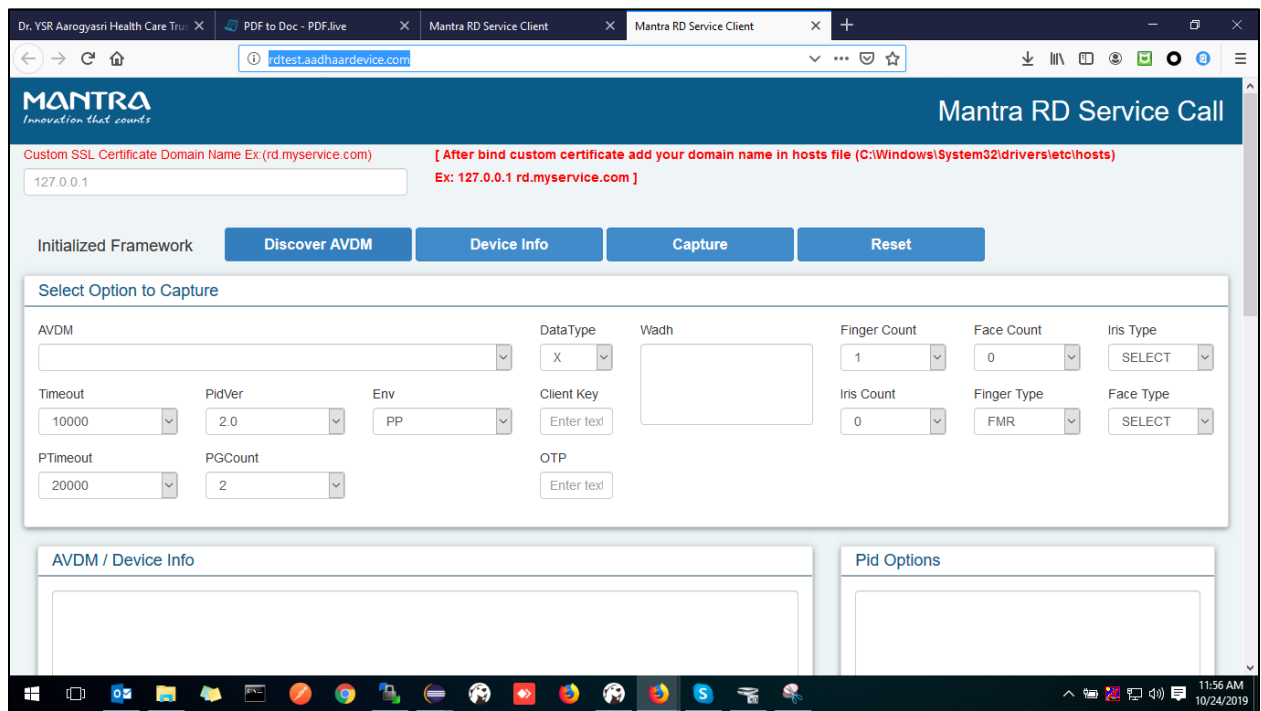
4.4. Test the RD Service

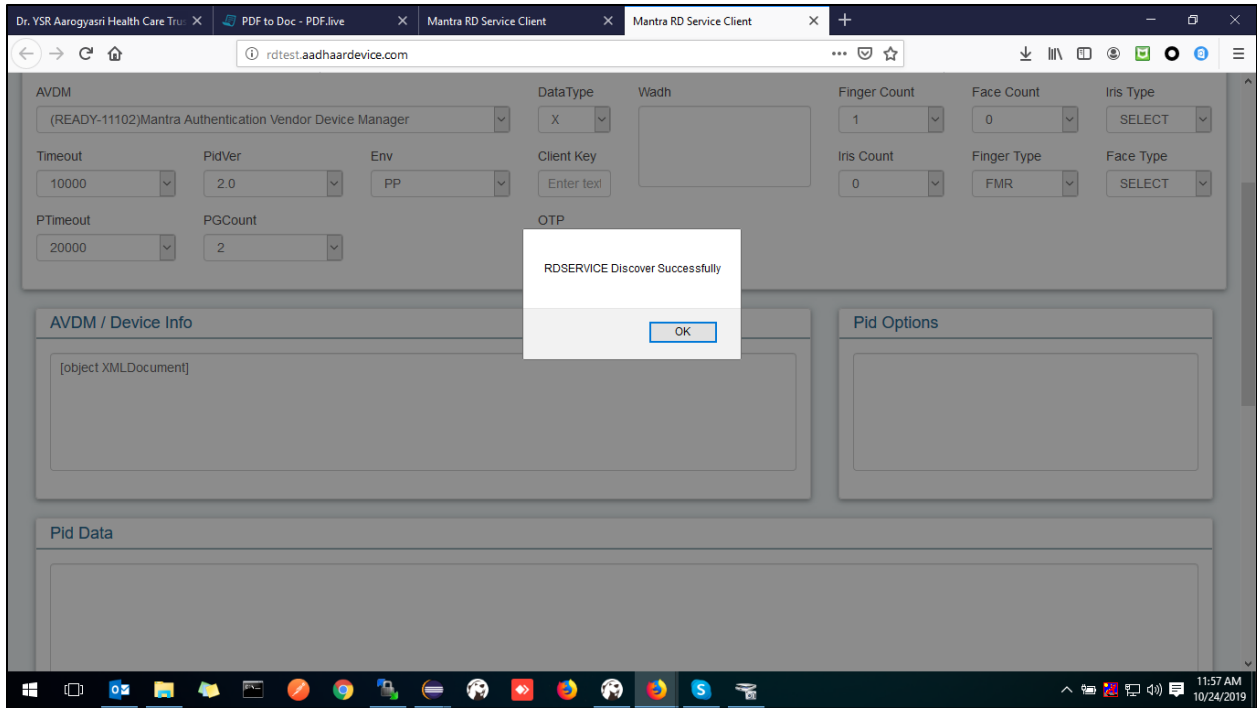
- Click on below given URL to Test the RD service

HTTP : <http://rdtest.aadhaardevice.com/>

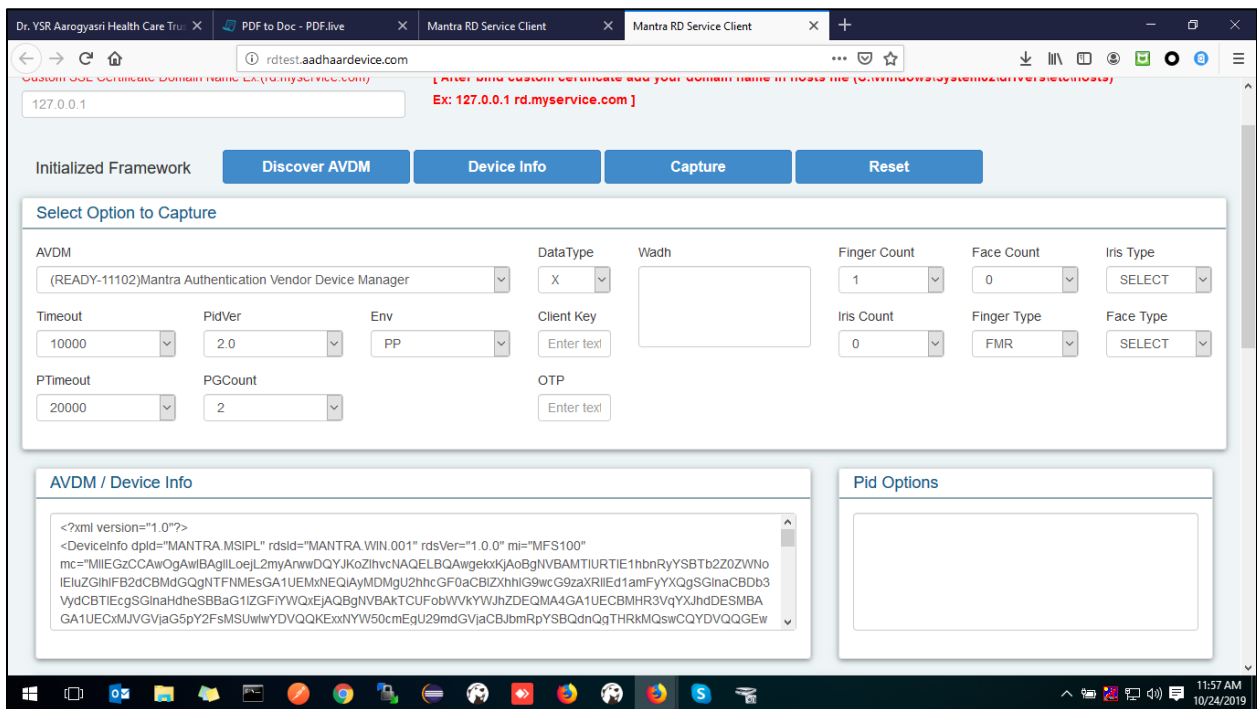
HTTPS : <https://rdtest.aadhaardevice.com/> (Test https URL if your website is in https)

- Click on Discover AVDM

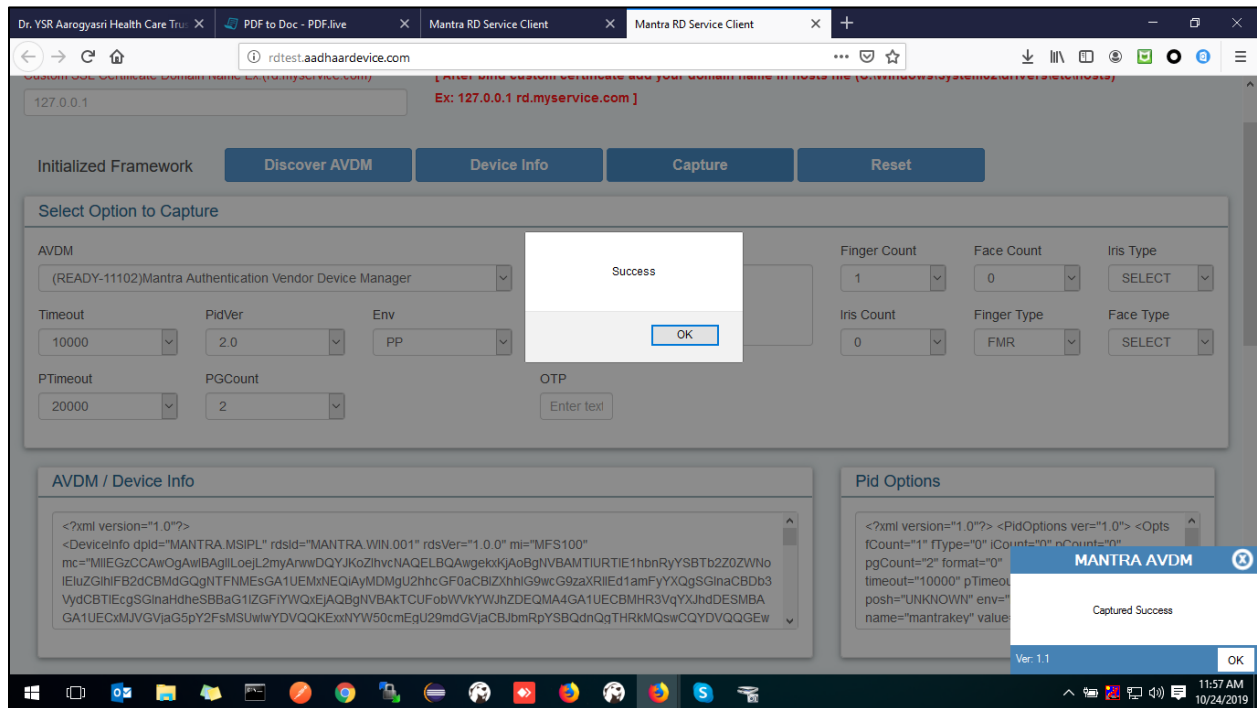




➤ To check device information, click on Device Info.



➤ Click on Capture



Device is ready to be use for Aadhar Based Biometric Authentication.

5. Access Application over the Internet

<http://www.ysraarogyasri.ap.gov.in/web/guest/ysrahct>